

LED车库灯

LED Parking Garage Light



高导热系数铝基板作为灯珠载体，解决快速散热问题。
Aluminum PCB with high thermal conductivity as chip carrier for faster cooling

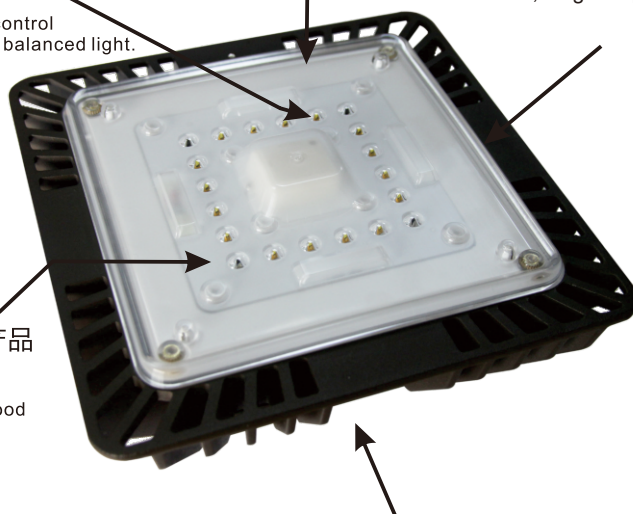
高透光率透镜模组，有效控制不同的光束角度，光线均匀。

Lens module with high transparency could control different beam angles effectively and ensure balanced light.

铝压铸壳体，表面喷漆处理，散热性好，外形美观
Die-casting aluminum body, outer surface with spray paint treatment, elegant appearance and excellent heat dissipation.

优质的LED灯珠，确保产品的可靠性和一致性。

High-class LED chip to ensure good reliability and consistency



采用美国通用接线盒设计，简单方便

Used design of US general junction box, easy operating.

IP65

UNIVERSELITE CO., LTD.
KUAJI CUN INDUSTRIAL ZONE, PINGSHUI TOWN, SHAOXING COUNTY,
ZHEJIANG PROVINCE, CHINA ZIP : 312051
Tel : 86-575-85739999
Fax : 86-575-85749999
Email: info@universelite.com
Website: www.universelite.com

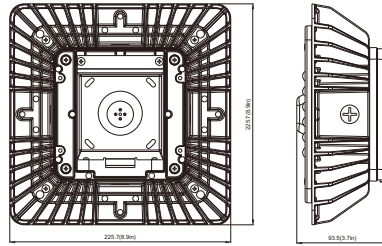
浙江宇光照明科技有限公司
地址：浙江省绍兴县平水镇会稽村工业集聚区
电话：86-575-85739999
传真：86-575-85749999
邮箱：info@universelite.com
网址：www.uvlte.com

灯具照片 Picture

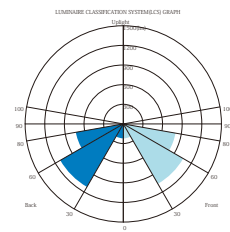
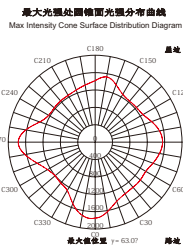
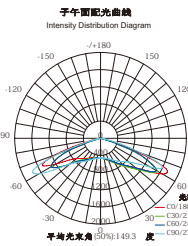
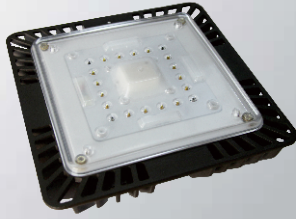
尺寸图 Dimensions

产品重量和包装 Weight & package

功率40W-60W



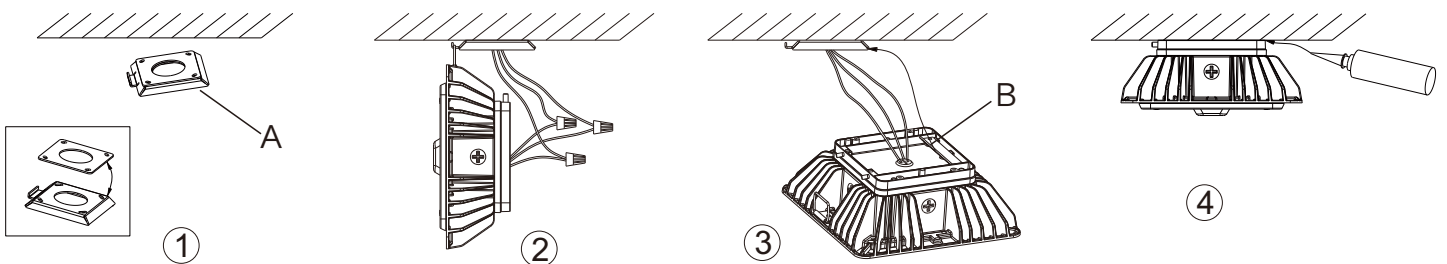
功率Wattage	40W	60W
净重N.W.	2.85KG	3.05KG
毛重G.W.	3.3KG	3.5KG
包装尺寸Package Size	28X28X16cm	
体积Volume	0.0125m ³	



BOLA Luminaires Flux Distribution Table		
Code	Luminaire	Comments %
B1 - Beam Luminaire	222.00	0.0
B2 - Beam Modulator	100.00	23.2
B3 - Beam Reflector	100.00	1.0
B3A - Beam View Reflector	21.43	0.3
Total Downward Light		254.43
B4 - Back Luminaire		0.0
B5 - Back Modulator	211.19	26.5
B6 - Back Reflector	756.08	11.5
B7 - Back View Reflector	25.50	0.2
Total Back Light		2088.9
Total Light		2343.33
B8 - Upward Luminaire	0.0	0.0
B9 - Upward Modulator	0.0	0.0
Total Up Light		0.0
B10 Back Up/Down Range		0.0

安装方式 Mounting

1): Junction box美国标准接线盒



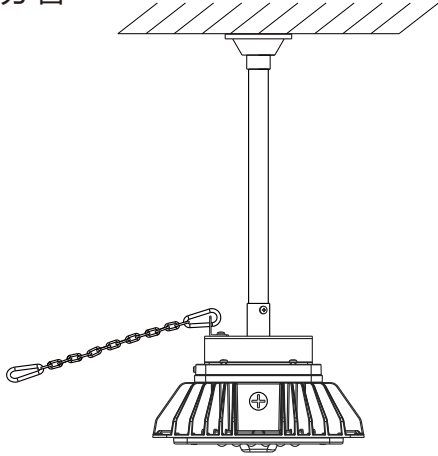
- 1.将EVA泡棉贴到配件A上，再用4颗紧固件将配件A固定于承载物体面；
- 2.灯具上的挂钩吊在配件A上，如图2所示，然后接线；
- 3.将接线端子塞进接线盒，配件A外侧卡在配件B下方，如图3箭头所示；
- 4.两颗紧固件穿过灯具孔眼顶到配件A,将灯具给予固定。并在灯具与承载物体面之间打上玻璃胶密封。

*使用紧固件前,可将紧固件表面涂适量厌氧胶,确保不因外界环境变化使紧固件松弛。

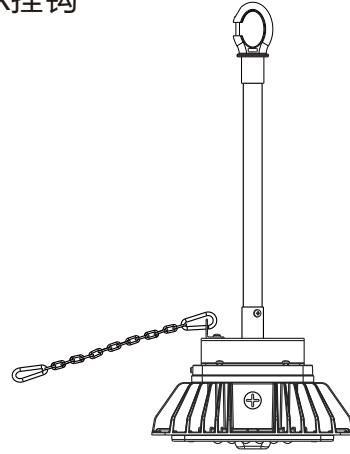
1. Stick EVA foam to template A, then fix template A on the wall with the 4 bolts (Picture 1).
2. Hang the hook on the template(A), as picture 2 shown, and then connect the wires.
3. Push the terminal blocks into the junction box, lock the outboard of template A into the place under B (as picture 3 shown by the arrow).
4. Secure the fitting to template A through the two side holes (Picture 4) with the 2 bolts. Apply caulk or RTV to sides of fixture where it meets the wall.

*Better to swear some anaerobic adhesive on the bolts before using.

2):Pipe四分管



3):Hook挂钩



LED车库灯参数表 Specification Sheet

项目描述Item description	LEDCK40W001	LEDCK60W001
灯具外形尺寸 Dimensions [mm]	226*226*93.5(L*W*H)	226*226*93.5(L*W*H)
输入电压 Input voltage [VAC]	100-277VAC	100-277VAC
输入电流 Input current [A]	0.35 (120V)	0.53 (120V)
输入端功率 Input watt [W]	40 ± 5%	60 ± 5%
功率因数 Power factor	>0.95	>0.95
工作灯电压 Voltage [V]	24	30
灯电流(参考)Current(reference) [A]	1.4	1.85
灯功率(参考)Wattage(reference) [W]	35 ± 5%	55 ± 5%
电源效率 Power efficiency	≥86%	≥85%
光通量 Luminous flux [Lm]	4000	5500
色温 Colour temperature [K]	4000-5700K	4000-5700K
显色指数 Colour index [Ra]	≥70	≥70
流明维持率 Lumen maintenance(2000h) [%]	98	98
平均寿命 Average life [h]	50000	50000
使用环境 Environment	WET	WET
使用环境温度要求 Ambient Temperature [°C]	-25°C-40°C	
燃点位置 Burning position	垂直向下照 ± 15° vertically downward ± 15°	

LUMINAIRE AMBIENT TEMPERATURE FACTOR(LATF)

流明环境温度系数

AMBIENT TEMPERATURE 环境温度	LUMEN MULTIPLIER 流明系数
0°C	1.02
10°C	1.01
20°C	1.00
25°C	1.00
30°C	1.00
40°C	0.99
50°C	0.98

Use these factors to determine relative lumen output for average ambient temperatures from 0-50°C(32-122°F)
 在平均环境温度 0-50°C(32-122°F), 利用这些系数来确定输出的相对流明